



Mini SRUB

Air-Cooled Self-Contained

SRUB Model
18,000-36,000 Btu/h
50 Hz





Mini SRUB



Room Thermostat

- Temperature setting: 16°C-30°C
- Mode of operation: allows for selection of 3 operating modes: High, Medium, and Low.

Features and Benefits

Capacity

The SRUB line includes of the capacity of 1.5, 2, and 3 Ton, which suits the demand for container use application.

High Durability

Design to support the most rigid climatic conditions, maintaining the durability of Trane equipments.

- Cabinet is constructed of electro galvanized sheet with a powder paint finish for corrosion resistance.
- Screws exposed to atmosphere are stainless steel providing high durability.
- Compressors are rotary type, with high efficiency, and low noise operation.

Trouble-Free Installation and Serviceability

- Factory installed options and testing: Reduces field labor and installation risk, and improves system reliability.
- Easy installation: Requires only wiring and power line. Handles, supply grille, and return grille are provided.
- Trouble-free access to the control box, blower, and compressor.
- Suction and Liquid Gauge Ports are easy to access to check pressure and recharge refrigerant.

Indoor Air Quality

- The case has been insulated with closed cell polyethylene insulation.
- Drain pan is designed to ensure proper drainage, preventing conditions of water stagnation that could result in microbial growth.

Quality Control

All of Trane products are inspected in assembly line. This is to assure that every parts will perform in the right condition and at the highest efficiency.

Application

- Design for use with the container.
- Suitable for container used in remote area i.e. in telecommunication business.
- Suitable for temporary use i.e. site office due to ease of installation and re-installation.

System Performance Matrix

Model	Evaporator (cfm)	Condenser (cfm)	Total Capacity (MBH)	Sensible Capacity (MBH)	Power Input Compressor (W)	Power Input Evap. Fan (W)	Power Input Condenser Fan (W)	Total System (KW)
SRUB018	600	1,360	18.1	11.2	1,680	118	95	1.89
SRUB024	800	1,360	24	14.2	2,420	124	95	2.64
SRUB036	1,200	2,130	36.2	22.1	3,420	305	209	3.93

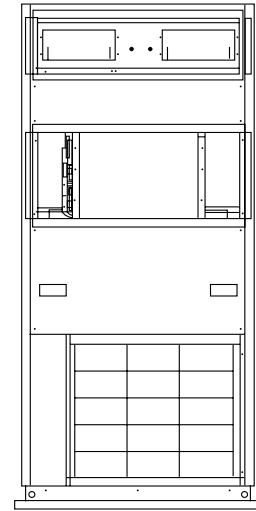
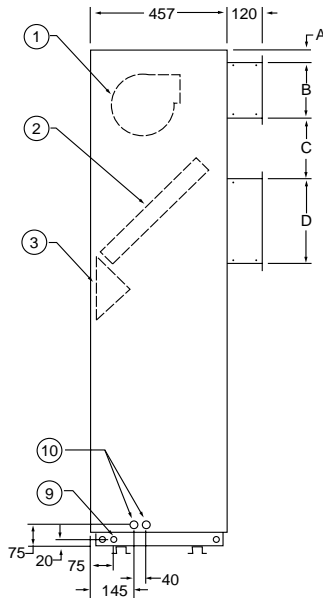
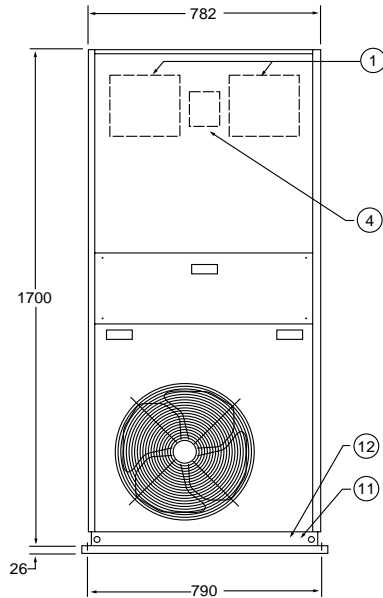
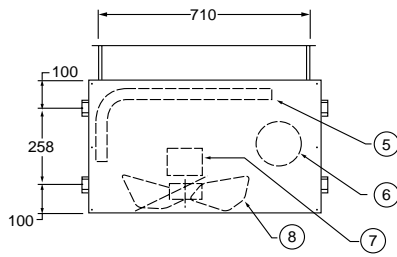
General Data

UNIT MODELS		SRUB018	SRUB024	SRUB036
NOMINAL CAPACITY	Btu/h	18,000	24,000	36,000
POWER CONNECTION	V/ph/Hz	220-240/1/50	220-240/1/50	380-415/3/50
MCA¹	A	10.77	15.16	9.57
SYSTEM DATA				
Refrigerant Type		R22	R22	R22
No. Refrigerant Circuits		1	1	1
EVAPORATOR COIL				
Face Area	ft ² (m ²)	2.0 (0.186)	2.5 (0.232)	3.84 (0.357)
Tube Size OD	in (mm)	3/8 (9.53)	3/8 (9.53)	3/8 (9.53)
Tube Type			Inner Grooved	
Rows		3	3	4
Fin Type			Slitted Fin, Uncoated	
Fins per inch		12	12	14
Refrigerant Flow Control			Capillary Tube	
Drain Connection Size	in (mm)	1/2 (12.7)	1/2 (12.7)	1/2 (12.7)
EVAPORATOR FAN				
Fan Type			Forward Curved Centrifugal Fan	
No. used		2	2	2
Diameter	in (mm)	6 (152.4)	6 (152.4)	7 (177.8)
Width	in (mm)	8 (203.2)	8 (203.2)	7 (177.8)
Drive Type			Direct Drive	
Nominal Airflow ²	cfm	600	800	1200
EVAPORATOR MOTOR				
Motor Type			Permanent Split Capacitor	
No. of Motor		1	1	1
Motor hp	W (output)	53	68	175
No. of Speed		3	3	3
Motor Speed	rpm	1300/1200/1100	1370/1280/1158	1330/980/830
V/ph/Hz		220/1/50	220/1/50	220/1/50
RLA/LRA		0.55/0.85	0.56/1.46	1.29/2.85
COMPRESSOR				
Compressor Type			Rotary	
No. Used		1	1	1
V/ph/Hz		220-240/1/50	220-240/1/50	380-415/3/50
RLA/LRA	A	7.8/43	11.3/55	5.8/44
CONDENSER COIL				
Face Area	ft ² (m ²)	4.74 (0.44)	4.74 (0.44)	7.29 (0.677)
Tube Size OD	in (mm)	3/8 (9.53)	3/8 (9.53)	3/8 (9.53)
Tube Type		Plain	Inner Grooved	Inner Grooved
Rows		2	2	2
Fin Type			Louver Fin, Uncoated	
Fins per inch		14	14	16
CONDENSER FAN				
Fan Type			Propeller Fan	
No. used		1	1	1
Diameter	in (mm)	18 (457.2)	18 (457.2)	20 (508)
Drive Type			Direct Drive	
Nominal Airflow ²	cfm	1360	1360	2130
CONDENSER MOTOR				
Motor Type			Permanent Split Capacitor	
No. of Motor		1	1	1
Motor hp	hp (W)	1/15 (48)	1/15 (48)	1/6 (113)
No. of Speed		1	1	1
Motor Speed	rpm	930	930	900
V/ph/Hz		220/1/50	220/1/50	220/1/50
RLA/LRA	A	0.46/0.93	0.46/0.93	1.03/1.79
DIMENSION (HxWxD)				
Crated (Shipping)	mm	1852x782x577	1852x782x577	1852x782x577
Uncrated (Net)	mm	1700x782x577	1700x782x577	1700x782x577
WEIGHT				
Crated (Shipping)	lb (kg)	243.2 (110.3)	259.7 (117.8)	293.2 (133.0)
Uncrated (Net)	lb (kg)	236.1(107.1)	252.6 (114.6)	286.2 (129.8)

¹ MCA - Minimum Circuit Ampacity

² CFM is rated with standard air-dry coil.

Outline Dimension SRUB 018-036



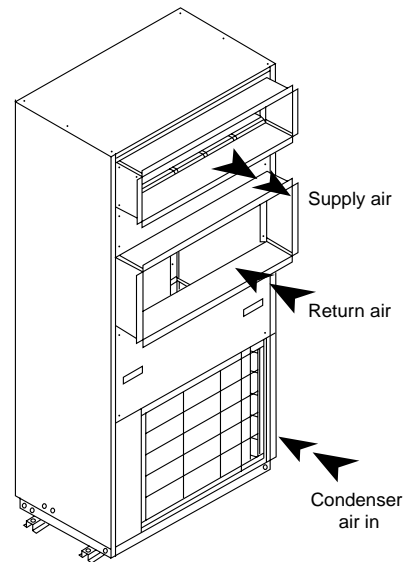
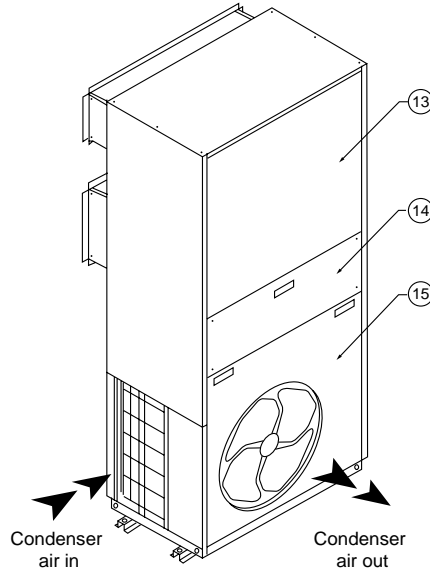
Model	Dimension(mm.)				Dia.(mm.)	
	A	B	C	D	Dia.⑨	Dia.⑩
SRUB018	47	187	208	292	25	27
SRUB024	47	187	208	292	25	27
SRUB036	47	187	208	392	25	27

Product Specification

- Evaporator and Condenser coils with 375 psig leak tested.
- High efficiency rotary compressor is externally mounted on isolators to isolate the operating sound for quiet operation.
- Filter drier is built-in.
- Room Thermostat is also provided. Temperature control is from 16-30 °C with 3 min. time delay.

Option

- High and low pressure cut-out devices.



- | | | |
|------------------|---------------------------|--------------------------------|
| 1 FAN, EVAP. | 6 COMPRESSOR | 11 ACCESS VALVE, GAS LINE |
| 2 COIL, EVAP. | 7 MOTOR, COND. | 12 ACCESS VALVE, LIQ. LINE |
| 3 ELECTRICAL BOX | 8 FAN, COND. | 13 ACCESS PANEL, EVAP. SECTION |
| 4 MOTOR, EVAP. | 9 DRAIN PIPE | 14 ACCESS PANEL, ELEC. BOX |
| 5 COIL, COND. | 10 ELECTRICAL WIRE OUTLET | 15 ACCESS PANEL, COND. SECTION |



Trane Thailand
7th Floor, Ploenchit Center Building
2 Sukhumvit Road, Klongtoey
Bangkok 10110
<http://www.tranethailand.com>

Literature Order Number: PKG-SLB024-EN 0602

New

Stocking Location: Bangkok, Thailand